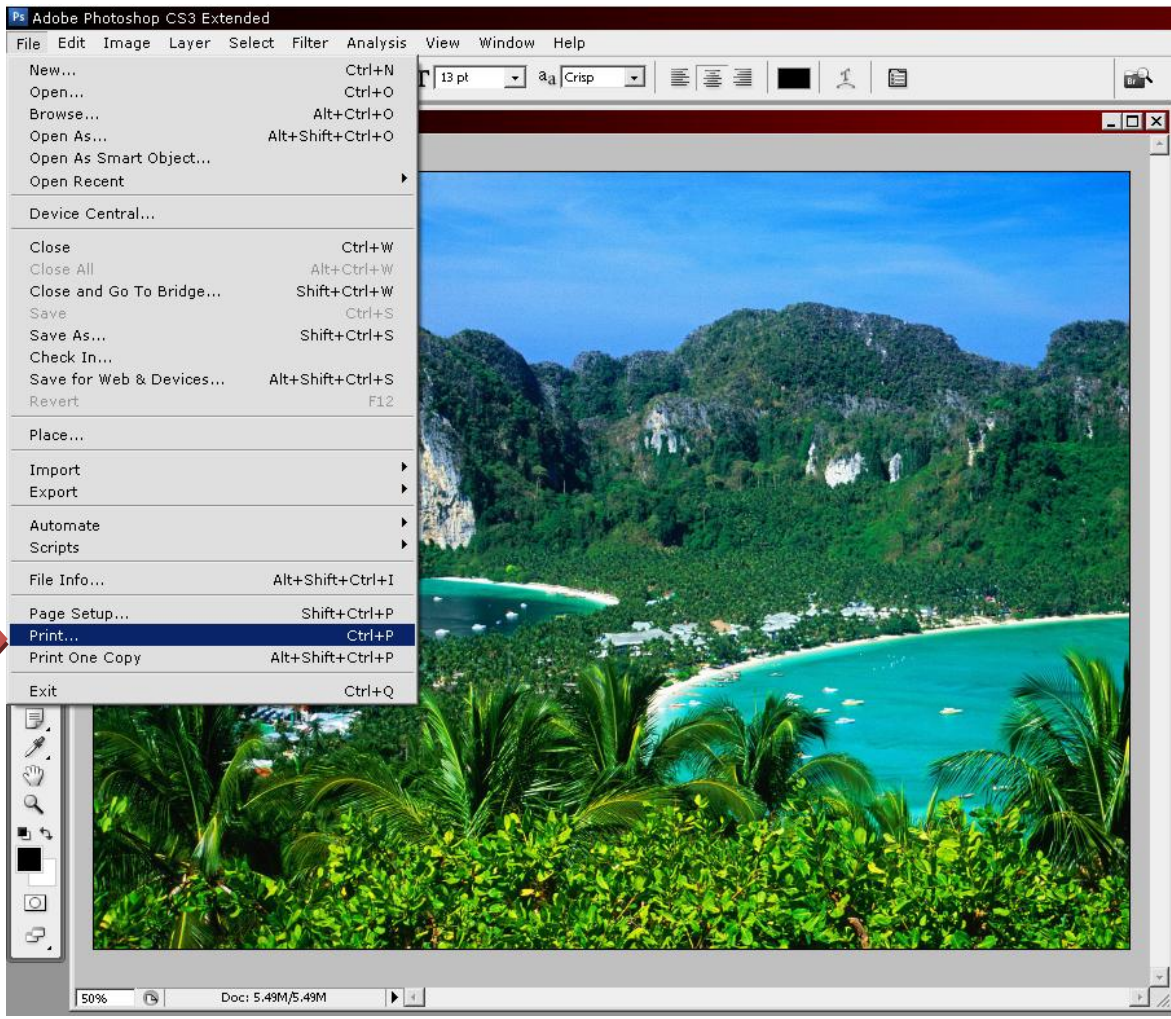


## Adobe Photoshop Settings:

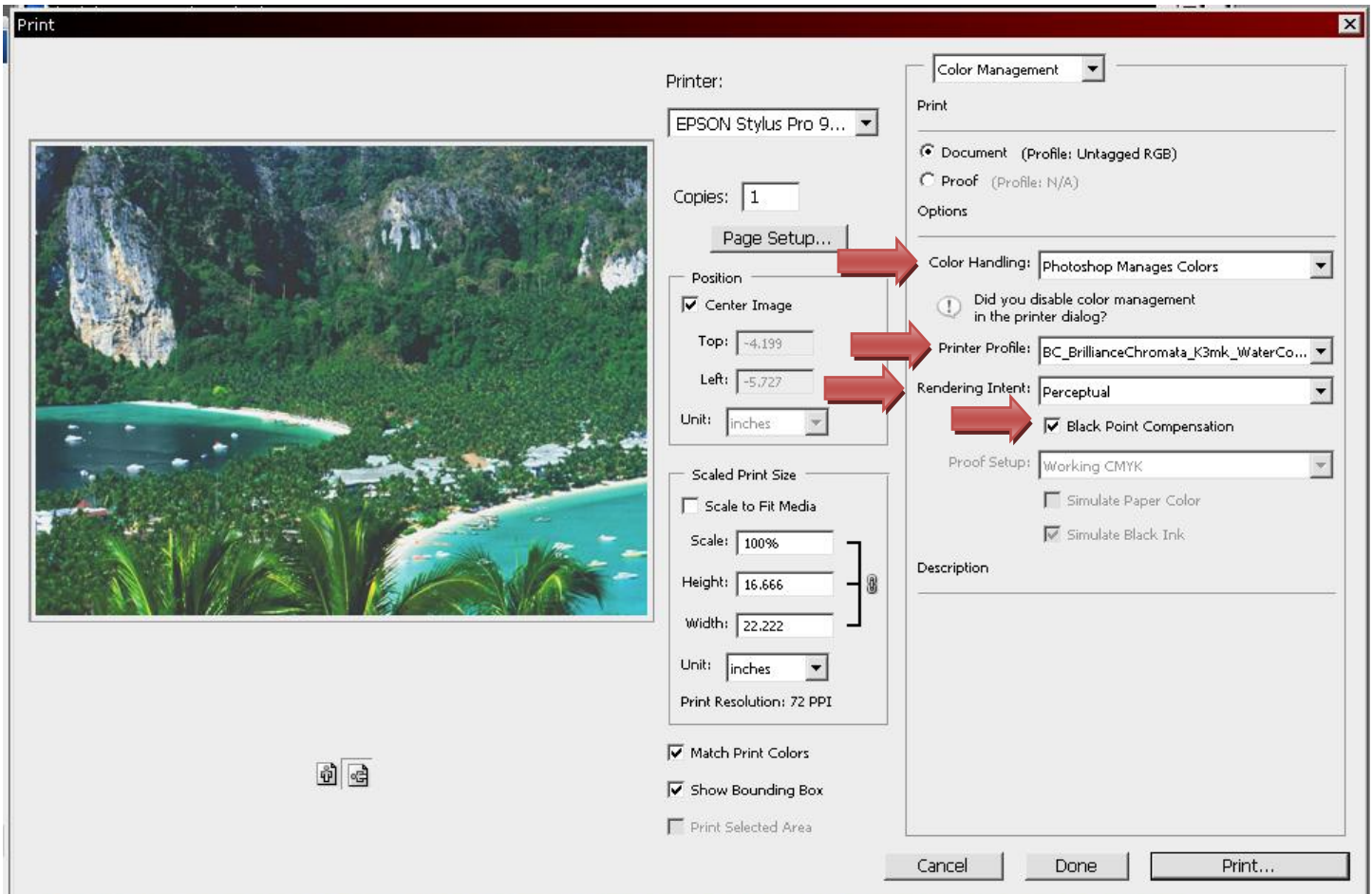
In order to get an accurate print, you must following these instructions exactly. If you are using an older version of Photoshop, please send an email to: [support@breathingcolor.com](mailto:support@breathingcolor.com). One of our support representatives will contact you with instructions for that version. Please read this entire document.

1. The first step is to access the Color Management settings in Photoshop. Go to the File menu and then “Print”.



Please continue to next page.

- There are several settings that must be selected in this dialogue box. First, under “Color Handling” select “Photoshop Manages Colors” (as shown below). Then, under “Printer Profile” apply the appropriate ICC Profile for the type for media you intend to print on. Note: If the designated ICC profile is not an available selection in this drop-down menu, you will need to install it first before you proceed. Next, Set your “Rendering Intent” to “Perceptual”. After you have the correct settings, click Print. Last, ensure that the box for “Black Point Compensation” is checked. Then click PRINT to select your printer and launch the Epson driver settings.



Please continue to next page.

## Epson Print Driver Settings (Matte Black):

**These settings are for Epson printers running MATTE Black ink only (if you are running Photo Black, please skip to the next page).**

When using an ICC profile it is critical to use the exact settings that the profile was created with. Therefore, these following steps will be very important to achieving accurate printing results. If you notice that the print quality is not accurate after running a test print, please check your settings and contact our Support Department at: [support@breathingcolor.com](mailto:support@breathingcolor.com) or 866-722-6567.

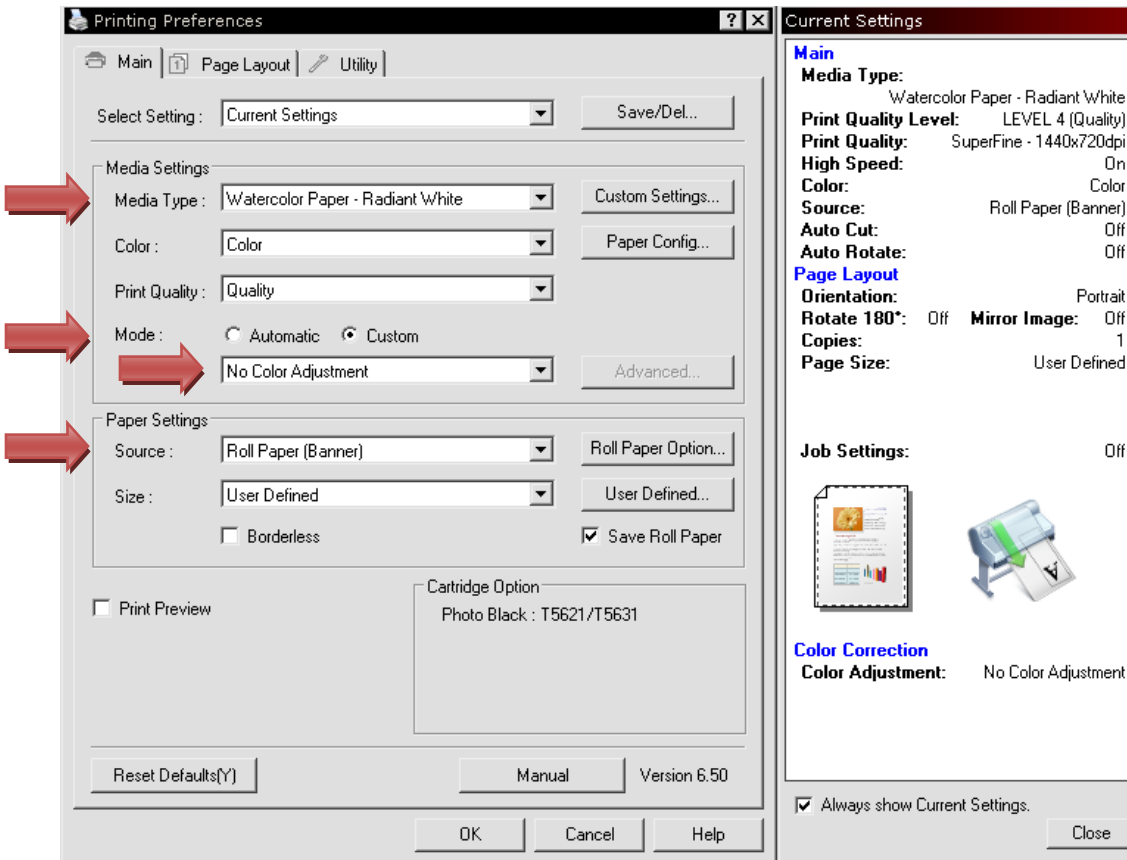
### Media Settings:

Media Type (for MATTE Black): **Fine Art Paper - Water Color Paper Radiant White**

Print Quality: **Quality (1440 DPI)**

Mode: **Custom – No Color Adjustment**

Paper Config – Platen Gap: **WIDER**



**Printing Preferences** [?] [X]

Main | Page Layout | Utility

Select Setting: Current Settings [v] Save/Del...

**Media Settings**

Media Type: Watercolor Paper - Radiant White [v] Custom Settings...

Color: Color [v] Paper Config...

Print Quality: Quality [v]

Mode:  Automatic  Custom

No Color Adjustment [v] Advanced...

**Paper Settings**

Source: Roll Paper (Banner) [v] Roll Paper Option...

Size: User Defined [v] User Defined...

Borderless  Save Roll Paper

Print Preview

Cartridge Option  
Photo Black : T5621/T5631

Reset Defaults(Y) Manual Version 6.50

OK Cancel Help

**Current Settings**

**Main**

**Media Type:** Watercolor Paper - Radiant White

**Print Quality Level:** LEVEL 4 (Quality)

**Print Quality:** SuperFine - 1440x720dpi

**High Speed:** On

**Color:** Color

**Source:** Roll Paper (Banner)

**Auto Cut:** Off

**Auto Rotate:** Off

**Page Layout**

**Orientation:** Portrait

**Rotate 180°:** Off **Mirror Image:** Off

**Copies:** 1

**Page Size:** User Defined

**Job Settings:** Off

**Color Correction**

**Color Adjustment:** No Color Adjustment

Always show Current Settings. Close

Please continue to next page.

## Epson Printer Settings (Photo Black):

**These settings are for Epson printers running PHOTO Black ink only.**

When using an ICC profile it is critical to use the exact settings that the profile was created with. Therefore, these following steps will be very important to achieving accurate printing results. If you notice that the print quality is not accurate after running a test print, please check your settings and contact our Support Department at: [support@breathingcolor.com](mailto:support@breathingcolor.com) or 866-722-6567.

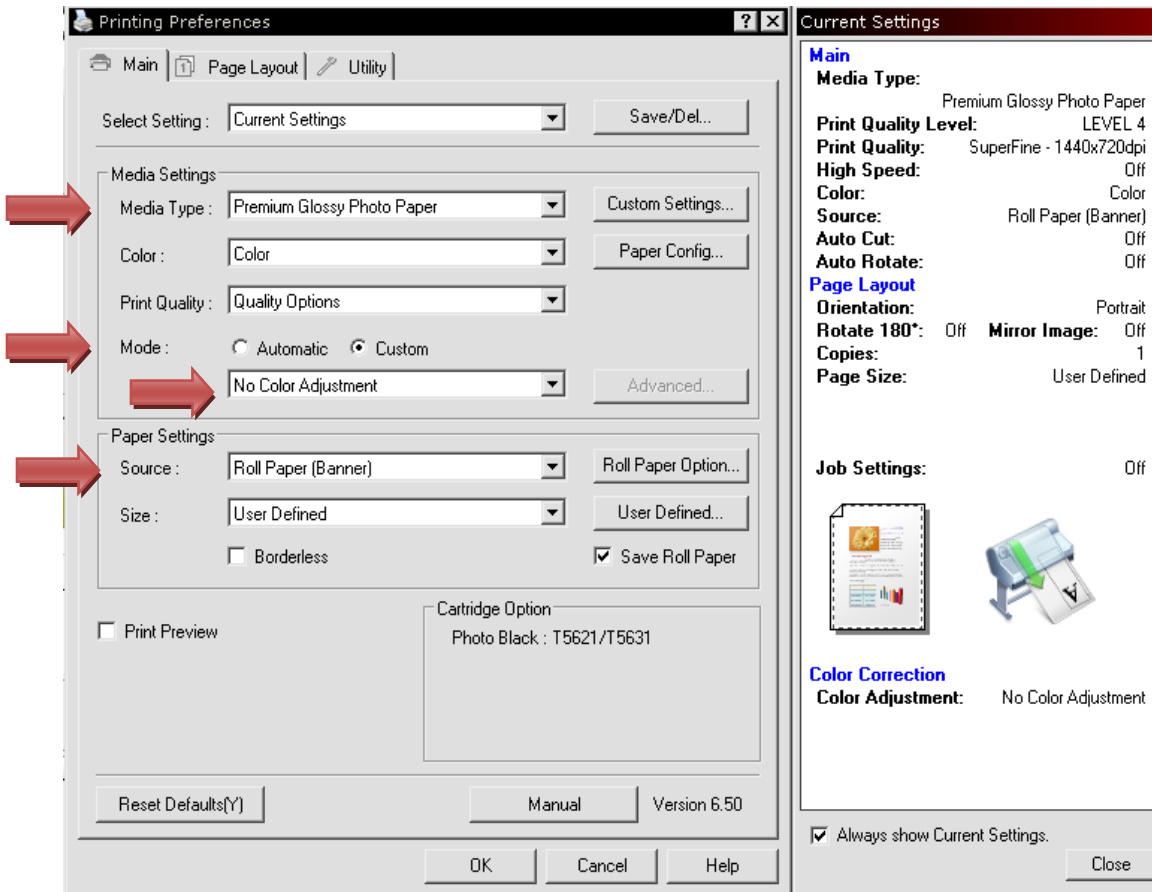
### Media Settings:

Media Type (for PHOTO Black): **Photo Paper - Premium Glossy Photo Paper**

Print Quality: **Quality (1440 DPI)**

Mode: **Custom – No Color Adjustment**

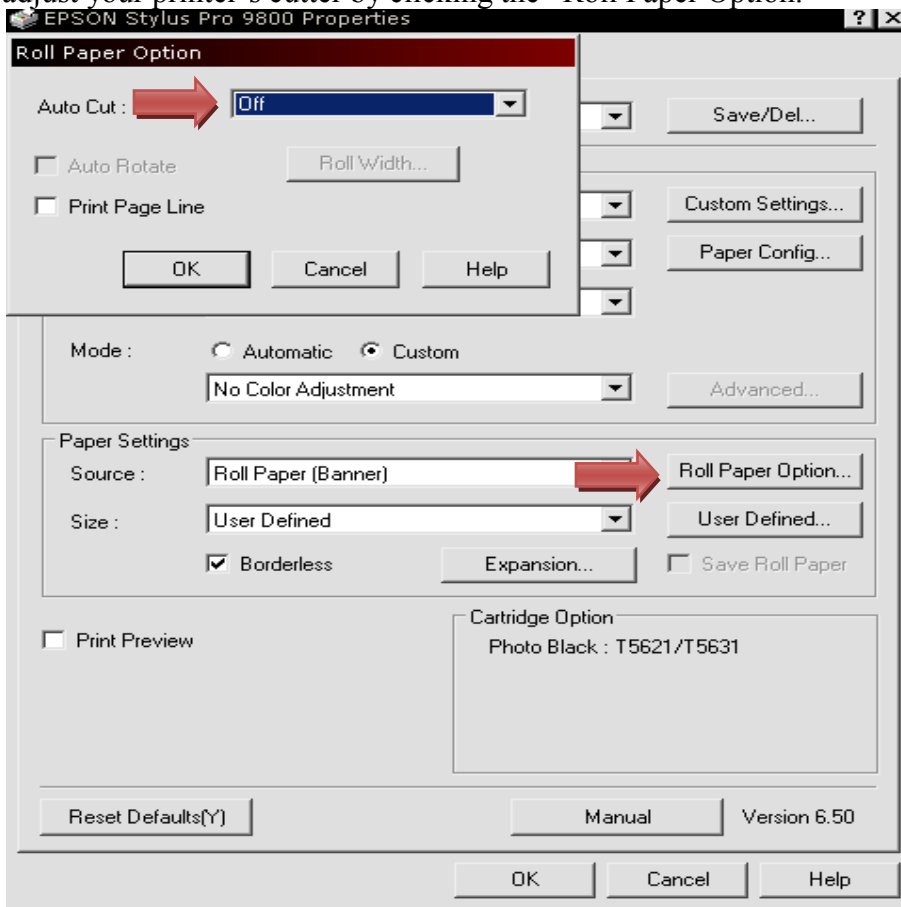
Paper Config – Platen Gap: **WIDER**



Please continue to next page.

## Printer Paper Settings:

We recommend turning your printer's cutter off when running canvas or fine art paper over 250gsm. You can adjust your printer's cutter by clicking the "Roll Paper Option."

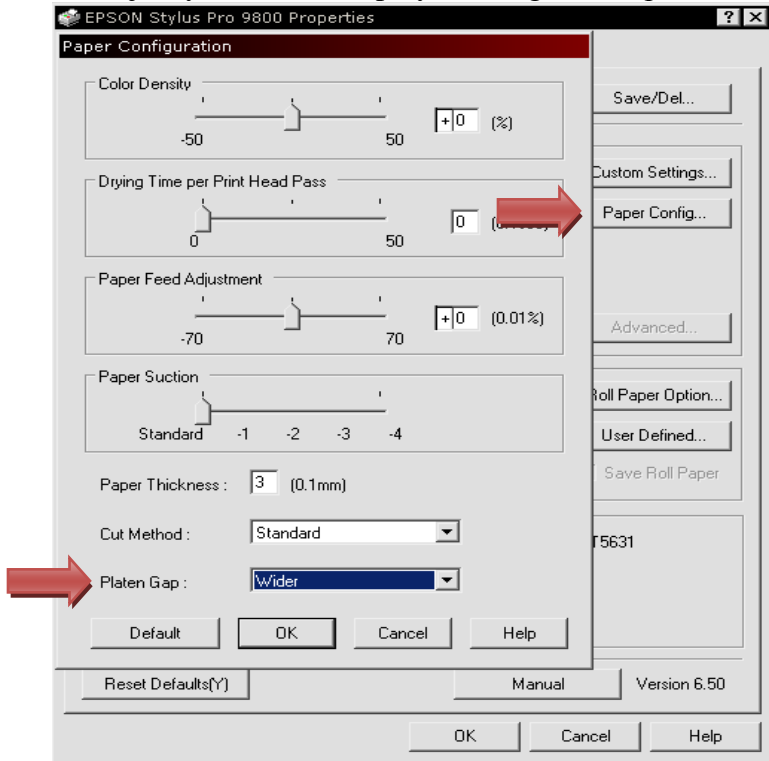


Paper Source – Select “**Roll Paper (banner)**” if printing on a roll and select “**Sheet**” if printing on sheets.

Please continue to next page.

## Platen Gap Adjustment:

When running canvas or fine art paper over 250gsm, you will need to adjust your Platen Gap to “Wider.” You can adjust your Platen Gap by clicking the “Paper Config” option.



If you have any questions about printer settings for Breathing Color products, please feel free to contact us on our toll free number: 1-866-72-COLOR. For Canada and International you may reach us at: 714-744-7085.

Technical Support: [support@breathingcolor.com](mailto:support@breathingcolor.com)