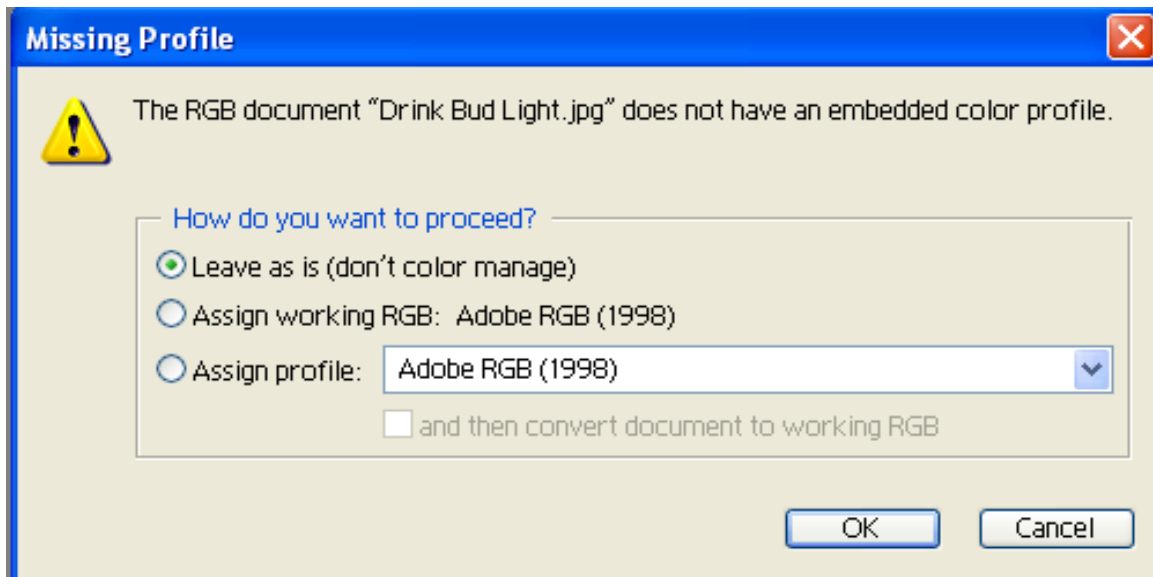


Using Profiles

Profiles tell your computer how to adjust an image to match the unique characteristics of your printer and papers. Your printer is only as good as the profiles that you use. Therefore, it is **absolutely critical** that you learn how to work with profiles. It is a very simple process once you understand the basics, so let's start there.

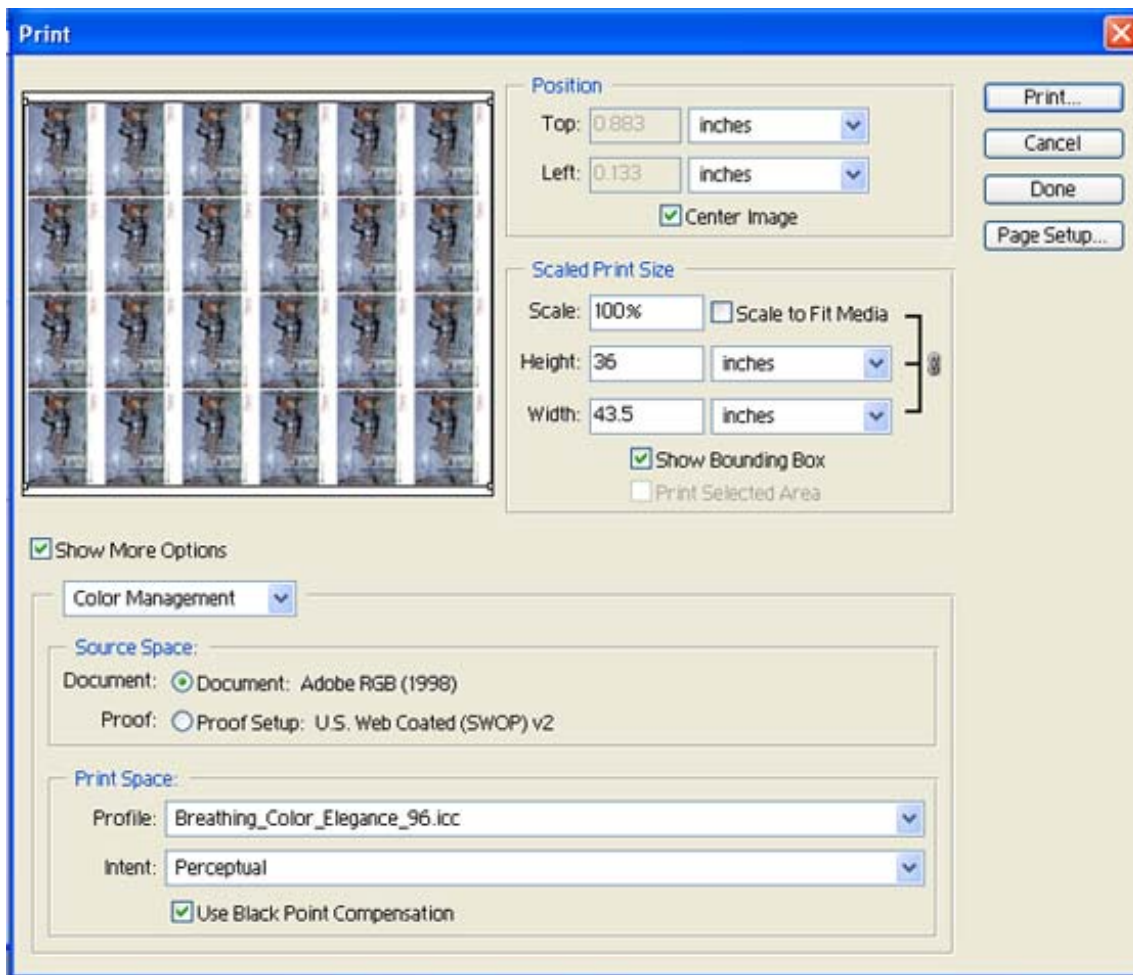
1. Open your file in Adobe Photoshop

When you open the file, you will get a warning saying that the image has no embedded profile, or that the file has an embedded profile. Either way, select "Leave as Is (Don't Color Manage)".



2. Use the Print Preview (Select the "File" tab in the upper left hand corner of your screen, then "Print Preview"). "Print Preview" can also be known as "Print Options" in older versions.

3. In the Print Preview window (see image below and follow these steps)
 - a. Select “show more options”,
 - b. Select “Color Management”, in the pull down tab.
 - c. In the “Source Space” area, select “Document: Adobe RGB 1998”
 - d. In the “Print Space” area, select the correct profile. **DOUBLE CHECK.**
 - e. Leave “Intent” as “Perceptual”.
 - f. Check the small box below to turn on “Black Point Compensation”.



3. Set the Media Type and Printer Resolution, Select “No Color Adjustments” (see image (a) and image (b)). **It is critical that you select PREMIUM GLOSSY PHOTO PAPER for your media type FOR EVERY PROFILE YOU USE WITH BREATHING COLOR, WHEN USING AN EPSON 9600/7600/10000/10600.** It does not matter what you are printing – canvas, paper, etc. – you always use Premium Glossy Photo Paper because it is a crucial part of how our profiles are built.

Image (a)

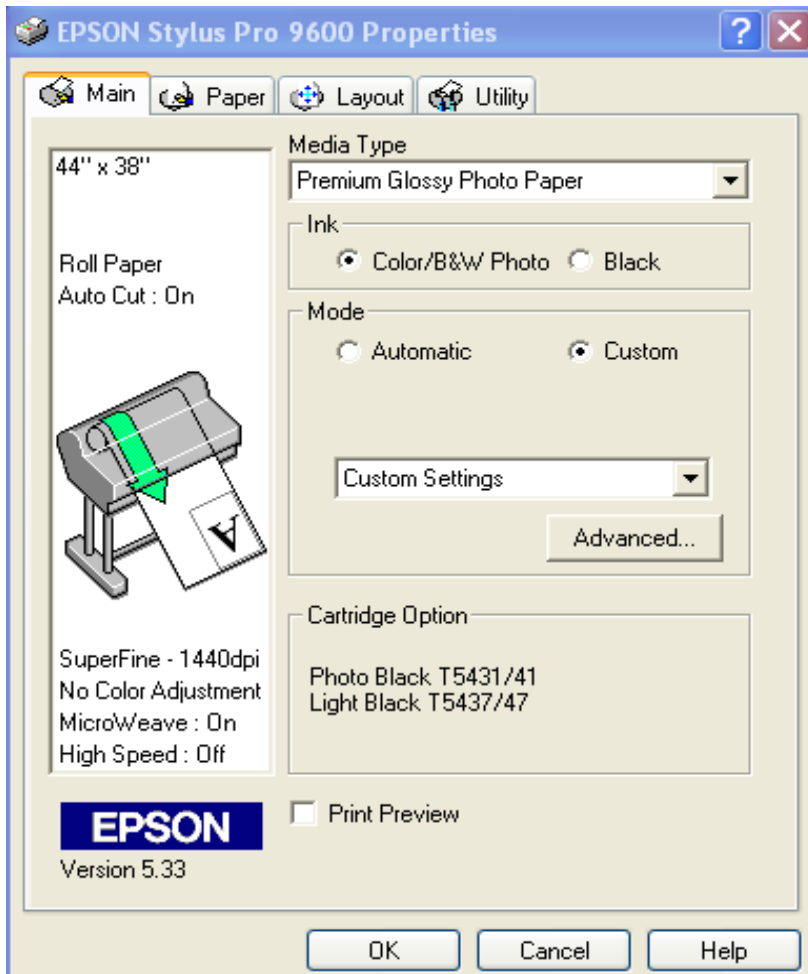
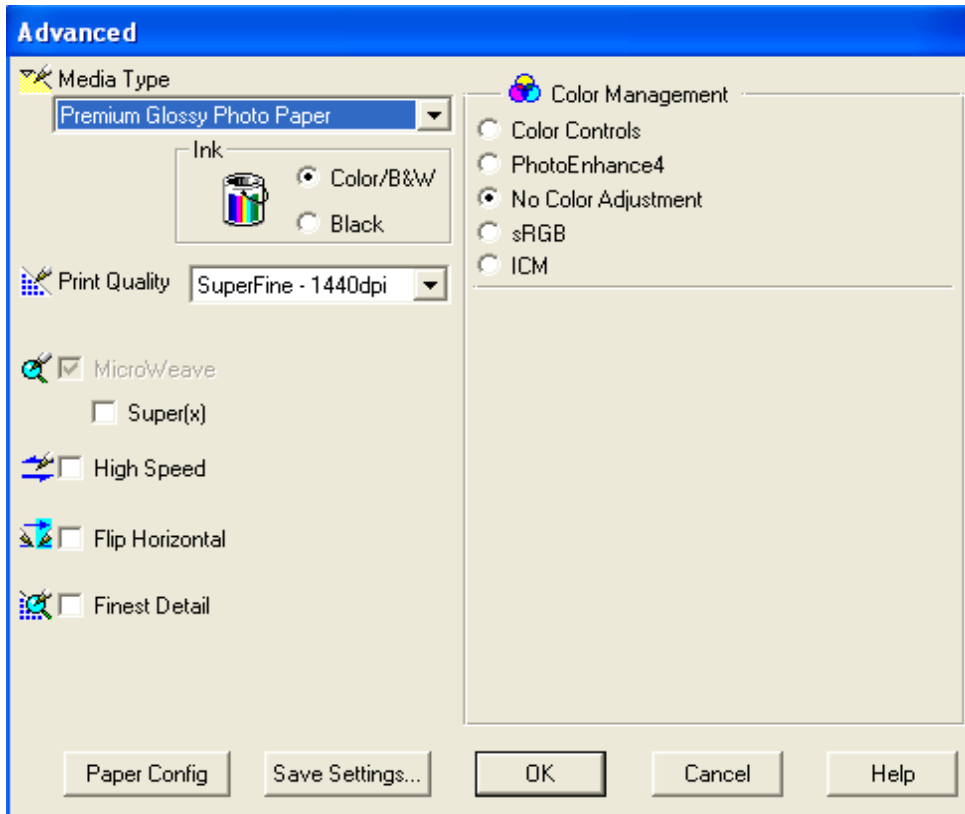


Image (b)



4. Notice the save settings button – **USE IT**. This will allow you to save a preset of these settings from the custom settings tab (on image (a) above) in the future.
5. Click ok and print!